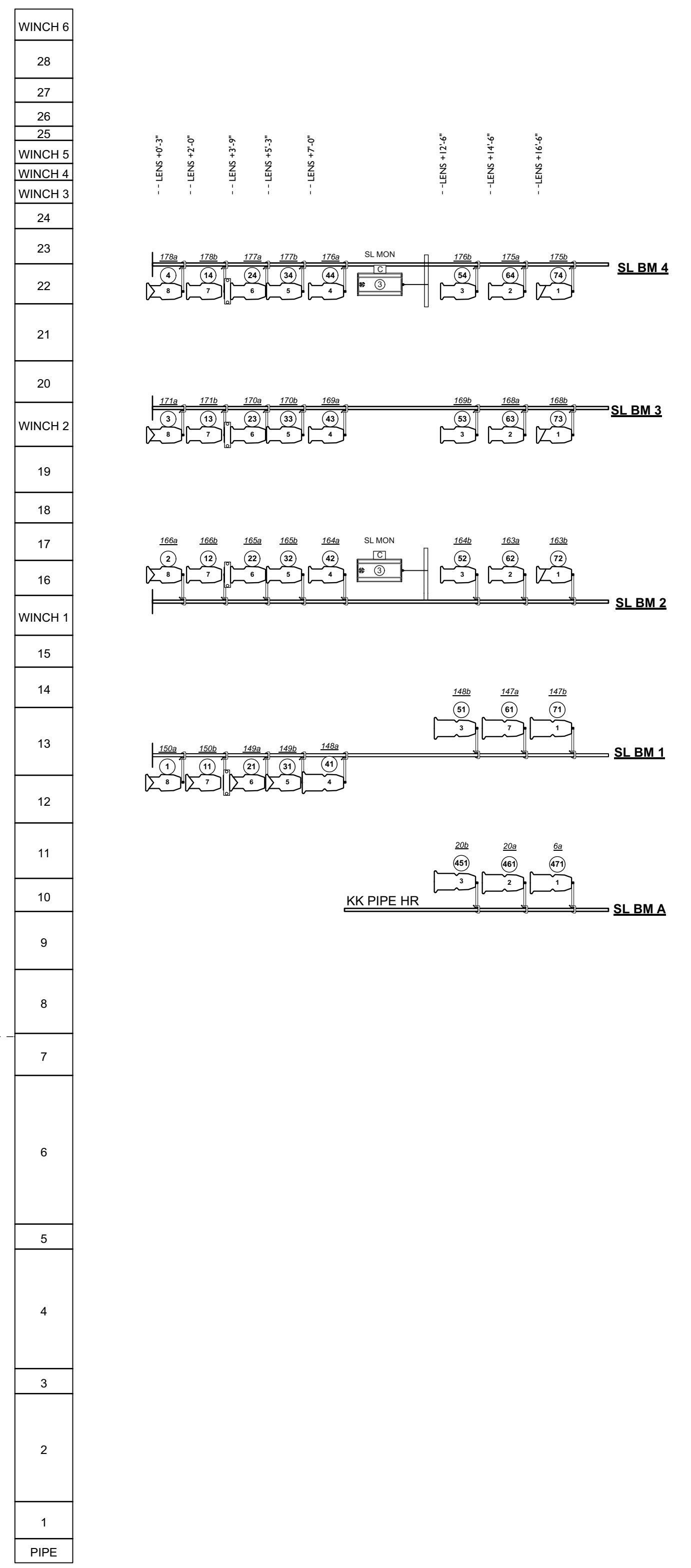
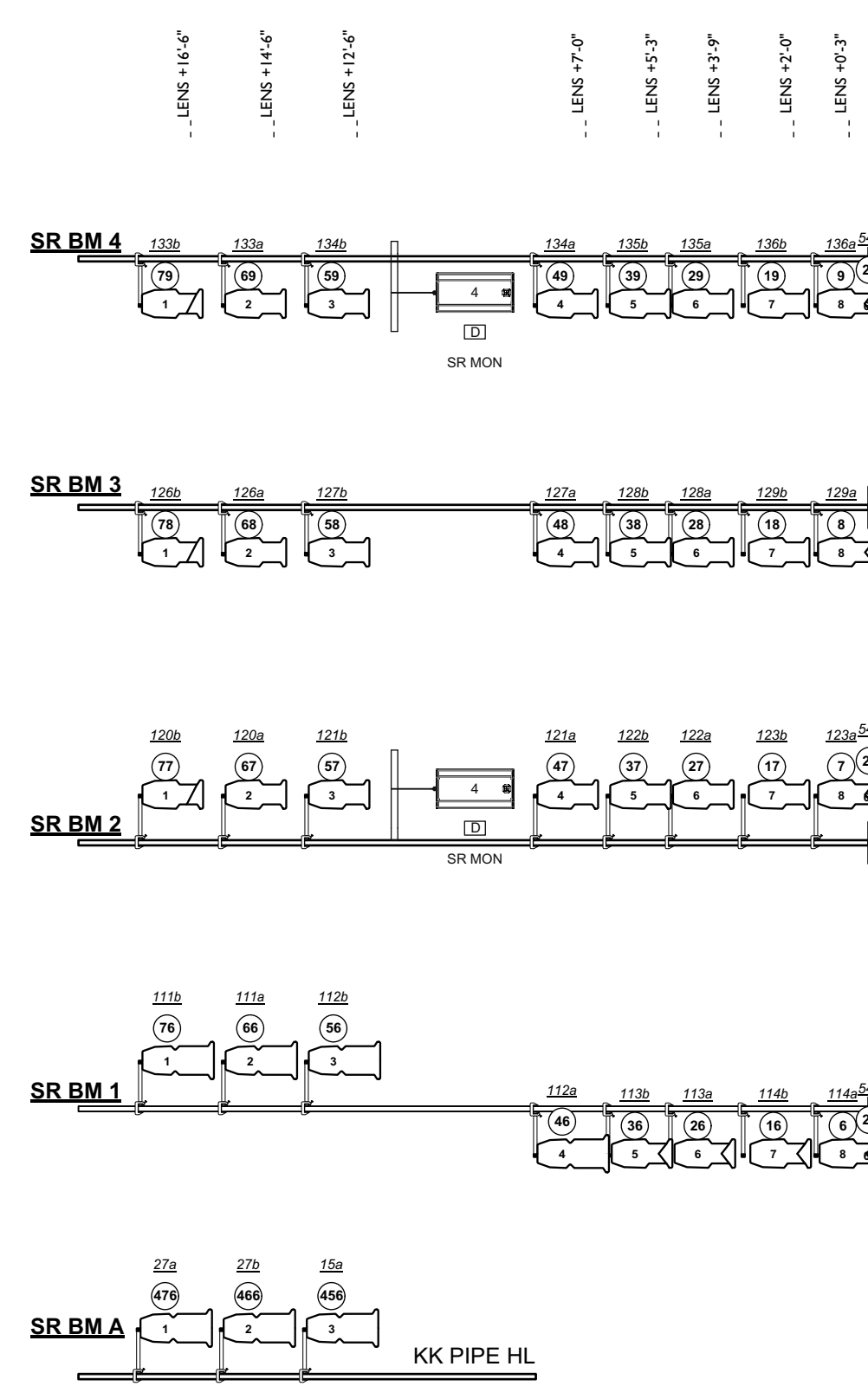


PIPE	FROM PL	REP HANG	SHOW HANG
WINCH 6	41'-3"	BOUNCE*	
28	39'-8"		
27	38'-8"		
26	37'-8"		
25	37'-1"		
WINCH 5	36'-1 1/2"	CYC*	
WINCH 4	33'-5"	BLACK SCRIM*	
WINCH 3	34'-5 1/2"	TRAV TRACK*	
24	33'-5"		
23	32'-0"		
22	30'-3"		
21	27'-11"		
20	26'-2 1/2"		
WINCH 2	24'-4"	TRAV TRACK*	
19	22'-5"		
18	21'-2"		
17	19'-7"		
16	18'-1 1/2"		
WINCH 1	16'-5 1/2"		
15	15'-5 1/2"		
14	13'-5 1/2"		
13	10'-7 1/2"		
12	8'-8"	DEAD HUNG TRAV TRACK	
11	6'-4"		
10	4'-11 1/2"		
9	2'-6"		
8	-0'-1"		
7	-1'-10"		
6	-8'-0"		
5	-9'-1"		
4	-14'-1"		
3	-15'-1 1/2"		
2	-19'-7 1/2"		
1	-21'-2"		



Channel	Galileo Mix	Hard Line Com
Channel		
Galileo Mix		
Hard Line Com		

KEY TO INSTRUMENTATION	WYBRON COLOR RAM II 7.5" SCROLLER	NYLA COLOR SCROLL
ETC S4 Zoom 25°-50° / 550w Frame Size: 7.5"	ETC S4 PARnel / 550w Frame Size: 7.5"	R502 - Pale Banana Amber
ETC S4 26° / 550w Frame Size: 6.25"	ETC S4 PAR MFL / 550w Frame Size: 7.5"	R17 - Light Blue
ETC S4 36° / 550w Frame Size: 6.25"	ETC S4 PAR WFL / 550w Frame Size: 7.5"	R18 - Light Green
ETC S4 50° / 550w Frame Size: 6.25"	ALTMAN #154 14" Scoop 500w	R19 - Light Red
VARI'LITE 1100 TS 1000w, Zoom, Iris Gobo, CMY Mixing, Shutters	ETC Vivid x7 Selador LED Strip Light	R20 - Medium Red
VARI'LITE 1000 TI 1000w, Zoom, Iris Gobo, CMY Mixing, No Shutters	L & E 6'-4" 3-Circuit MiniStrip / 750w	R21 - Dark Red
	Vertical Pipe Position Icon	R22 - Red
		R23 - Orange
		R24 - Yellow
		R25 - Light Green
		R26 - Green
		R27 - Medium Green
		R28 - Dark Green
		R29 - Teal
		R30 - Blue
		R31 - Light Blue
		R32 - Blue
		R33 - Dark Blue
		R34 - Purple
		R35 - Magenta
		R36 - Red
		R37 - Orange
		R38 - Yellow
		R39 - Pale Yellow
		R40 - White

PIPE	FROM PL	REP HANG	SHOW HANG
WINCH 6	41'-3"	BOUNCE*	
28	39'-8"		
27	38'-8"		
26	37'-8"		
25	37'-1"		
WINCH 5	36'-1 1/2"	CYC*	
WINCH 4	33'-5"	BLACK SCRIM*	
WINCH 3	34'-5 1/2"	TRAV TRACK*	
24	33'-5"		
23	32'-0"		
22	30'-3"		
21	27'-11"		
20	26'-2 1/2"		
WINCH 2	24'-4"	TRAV TRACK*	
19	22'-5"		
18	21'-2"		
17	19'-7"		
16	18'-1 1/2"		
WINCH 1	16'-5 1/2"		
15	15'-5 1/2"		
14	13'-5 1/2"		
13	10'-7 1/2"		
12	8'-8"	DEAD HUNG TRAV TRACK	
11	6'-4"		
10	4'-11 1/2"		
9	2'-6"		
8	-0'-1"		
7	-1'-10"		
6	-8'-0"		
5	-9'-1"		
4	-14'-1"		
3	-15'-1 1/2"		
2	-19'-7 1/2"		
1	-21'-2"		

LIGHTING NOTES	SPARE UNIT INVENTORY
*New York Live Arts REPERTORY LIGHTING PACKAGE IS "MULTI-LEXED" (77w 550w)	ETC SOURCE 4:
* The boom scroller position is moveable (different units, same boom)	S4 BODIES: 35
* The overhead selador fixtures are dead hung	19" LENS: 14
* The groundrow seladors fixtures are not recommended to have a focus that is seen by the audience. Units are 1st generation and are beginning to experience data loss.	26" LENS: 50
* The VL100s are not moveable from Rep Positions	36" LENS: 89
* To Hang additional units FOH plans for additional time. An extension ladder will need to be used to access most positions.	50" LENS: 40
	2550" ZOOM: 26
	S4 PARNEL: 14
	S4 PAR: 12
	S4 FRESNEL: 5

SOFT GOOD INVENTORY	SCENIC NOTES
(1) WHITE CYC	50' W x 19'
(1) WHITE BOUNCE	50' W x 19'
(1) BLACK SCRIM	52' W x 19'
(3) BORDERS	50' W x 3'
(2) US TRAV	28' W x 17'
(2) DS TRAV	28' W x 18' 4"
(6) LEGS	8' W x 18' 7"
(2) LEGS	6' W x 18' 7"
(2) TABS	3' W x 18' 7"
(4) TABS	6' W x 18' 7"

SCENIC NOTES
*Standard softgood POSITIONS are indicated in RED on the line set schedule
*Theater Rep has NO SOFTGOODS hung
*Grid Height = 19'
*Electrics are dead hung
*Manual pinches pipes
*Typical leg opening is 20' from center
*False walls can be removed
*Traveler tracks do NOT move

DRAWING NAME: <b>REP PLOT</b>		2020-21 SEASON	
COMPANY NAME:		New York Live Arts 219 W. 19th Street NY, NY 10011 www.newyorklivearts.org 212.691.6500 212.633.1974 (fax)	
LIGHTING DESIGNER:	EMAIL ADDRESS:	Director of Production Hillery Makatura hmakatura@newyorklivearts.org	Production Manager Kristiana Cowcer kcowcer@newyorklivearts.org
DATE ISSUED:	REVISION #:	Technical Director Ryan Naso rnaso@newyorklivearts.org	
REP PLOT DRAWN BY: LL, AV, LB, VMV	SCALE: 1/4" = 1'-0"	Lighting Supervisor Lauren Libretti llibretti@newyorklivearts.org	

