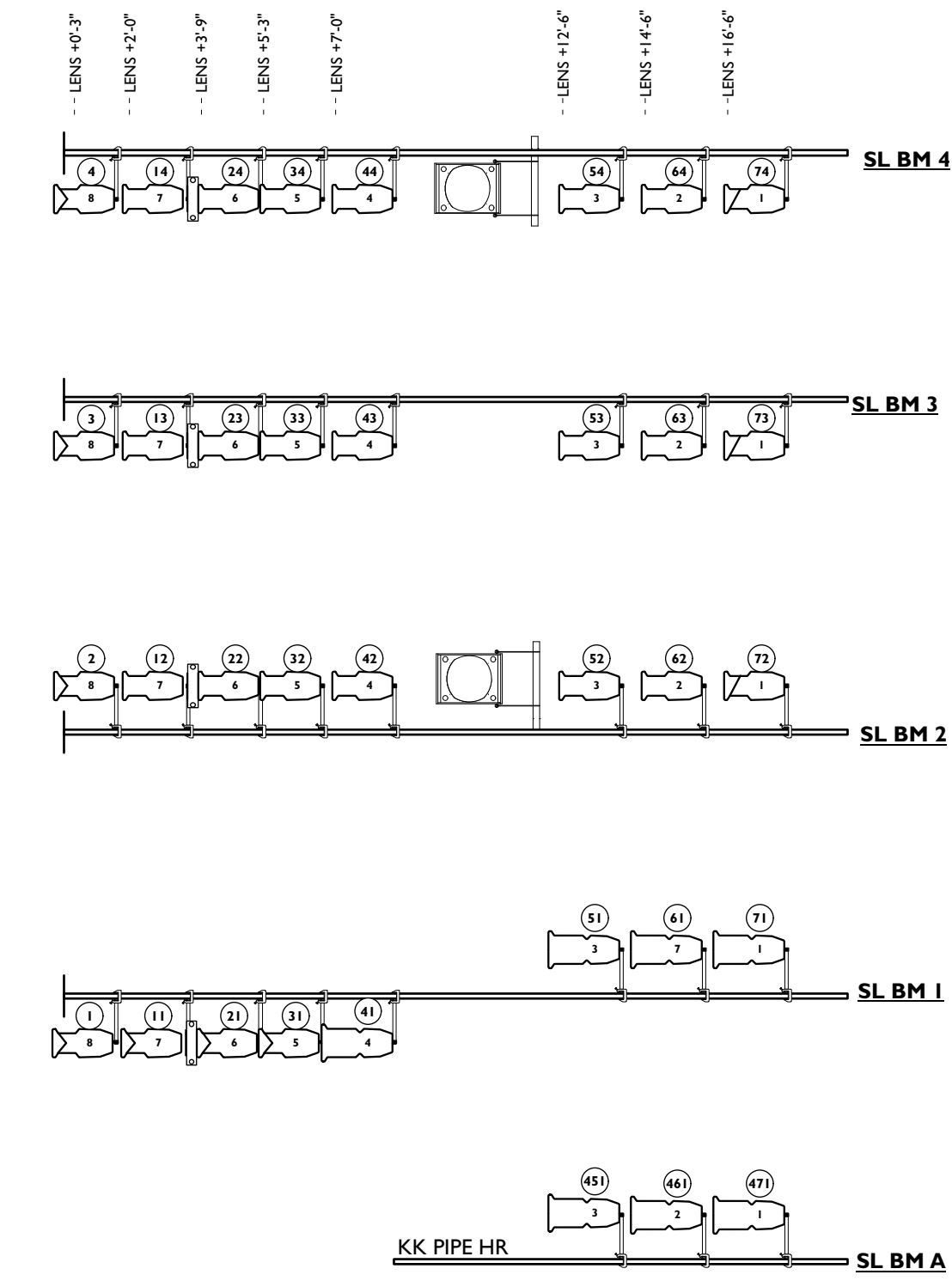
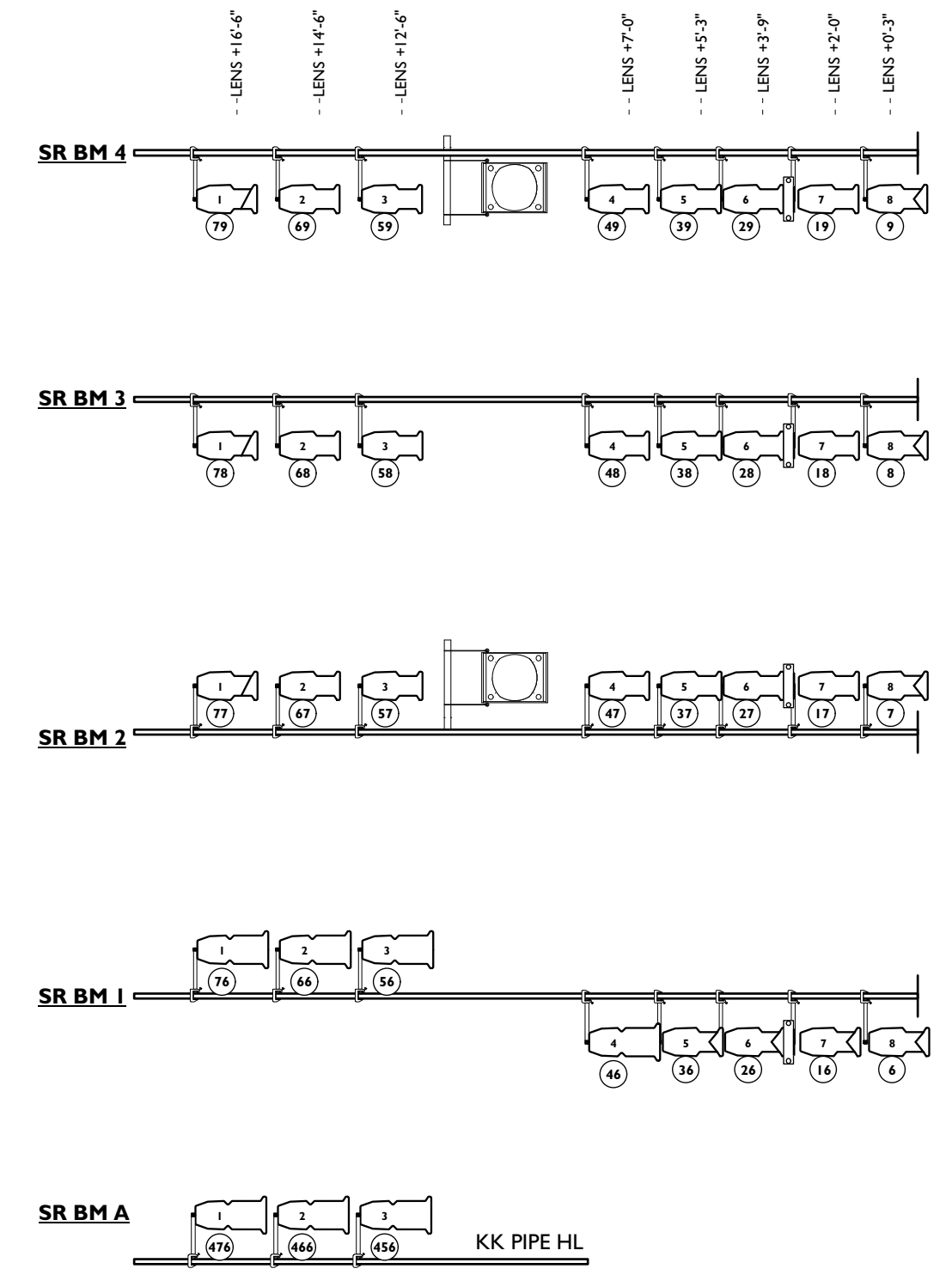


WINCH 6	41'-3"
28	39'-8"
27	38'-8"
26	37'-8"
25	37'-1"
WINCH 5	36'-1 1/2"
WINCH 4	33'-5"
WINCH 3	34'-5 1/2" TRAV TRACK
24	33'-5"
23	32'-0"
22	30'-3"
21	27'-11"
20	26'-2 1/2"
WINCH 2	24'-4"
19	22'-5"
18	21'-2"
17	19'-7"
16	18'-1 1/2"
WINCH 1	16'-5 1/2" TRAV TRACK
15	15'-5 1/2"
14	13'-5 1/2"
13	10'-7 1/2"
12	8'-8"
11	6'-4"
10	4'-11 1/2"
9	2'-6"
8	-0'-1"
7	-1'-10"
6	-8'-0"
5	-9'-1"
4	-14'-1"
3	-15'-1 1/2"
2	-19'-7 1/2"
1	-21'-2"
PIPE	FROM PL HOUSE HANG

WINCH 6	
28	
27	
26	
25	
WINCH 5	
WINCH 4	
WINCH 3	
24	
23	
22	
21	
20	
WINCH 2	
19	
18	
17	
16	
WINCH 1	
15	
14	
13	
12	
11	
10	
9	
8	
7	
6	
5	
4	
3	
2	
1	
PIPE	



NOTES
Show related notes

GRID HEIGHT = 19'-0"
ALL ELECTRICS ARE DEAD-HUNG
6 MANUAL WINCH PIPES
LEGS ARE HUNG 20" FROM CENTER

KEY TO INSTRUMENTATION

- ETC S4 Zoom 25°-50° / 550w
Frame Size: 7.5"
- ETC S4 26° / 550w
Frame Size: 6.25"
- ETC S4 36° / 550w
Frame Size: 6.25"
- ETC S4 50° / 550w
Frame Size: 6.25"
- VARI*LITE 1000 TI
1000w, Zoom, Iris
Gobo, CMY Mixing,
No Shutters
- Wybron ColorRam II 7.5"
Scroller
- ETC S4 PARnel / 550w
Frame Size: 7.5"
- ETC S4 PAR MFL / 550w
Frame Size: 7.5"
- ETC S4 PAR WFL / 550w
Frame Size: 7.5"
- Altman #154 14" Scoop 500w
- ETC Vivid x7 Selador LED Strip Lights
- L & E 6'-4" 3-Circuit MiniStrip / 750w
- Vertical Pipe Position Icon

NYLA Color Scroll

8305 - Pale Neutral Amber	1
8112 - Light Purple	2
8113 - Medium Purple	3
8106 - Primary Red	4
8237 - Medium Red	5
8132 - Green	6
83115 - Length 1/2 Phosphor	7
8001 - 100% Green	8
1330 - Primary Cyan	9
6466 - Blue/Cyan	10
8728 - Steel Cyan	11
84114 - 4000K 1 1/2" Cool	12
8000 - Cool	13
1200 - 1 1/2" CCT Blue	14
1200 - 1 1/2" CCT Blue	15
1200 - 1 1/2" CCT Blue	16
1200 - 1 1/2" CCT Blue	17
1200 - 1 1/2" CCT Blue	18
848 - Sky Blue	19
1200 - 1 1/2" CCT Blue	20
1200 - 1 1/2" CCT Blue	21
809 - Indigo	22
809 - Indigo	23
809 - Indigo	24
841 - Sapphire Pink	25
844 - Special Lavender	26
G154 - Baby Pink	27
8116 - 1 1/2" CCT Blue	28
8128 - Bright Pink	29
8140 - 1 1/2" CCT Blue	30
8447 - Sky Blue	31
8447 - Sky Blue	32
8447 - Sky Blue	33
8447 - Sky Blue	34

DRAWING NAME: REP LIGHT PLOT		2017-18 SEASON		NEW YORK LIVE ARTS
COMPANY NAME: COMPANY NAME		New York Live Arts 219 W. 19th Street NY, NY 10011 www.newyorklivearts.org 212.691.6500 212.633.1974 (fax)		
LIGHTING DESIGNER:	LD EMAIL ADDRESS:	Director of Production	Production Coordinator	
Hilary Makatura	Eliza J. Brennesel	hmakatura@newyorklivearts.org	ebrennesel@newyorklivearts.org	
DATE ISSUED:	REVISION #:	Technical Director Thomas Bowersox tbowersox@newyorklivearts.org		
	1	Lighting Supervisor Lauren Libretti libretti@newyorklivearts.org		
REP PLOT DRAWN BY:	SCALE:			
LL, AV, LB, VMV	1/4" = 1'-0"			